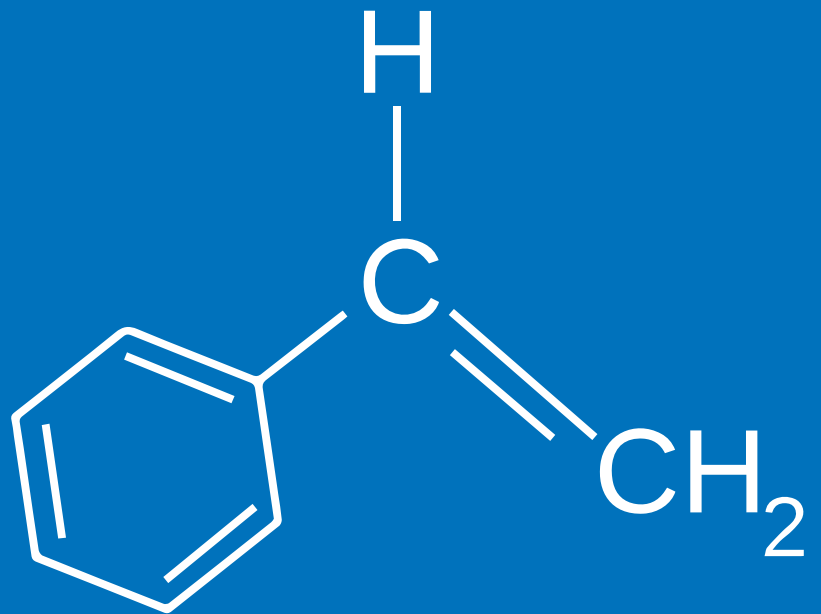


PLASTICS TECHNOLOGY



WE BRING YOUR IDEA TO FORM

PROJECT PLANNING



Founded in 1943

Owner-managed

Plastics technology/ mechanical engineering/ manufacturing

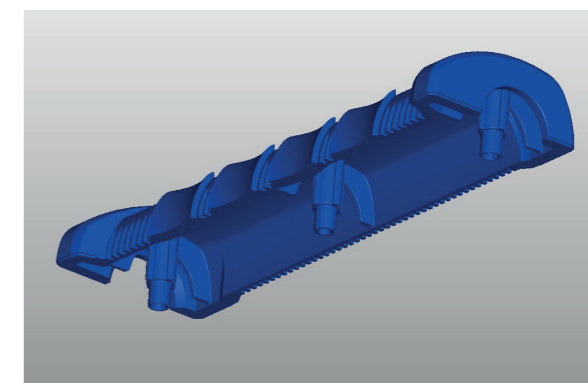
Customers in nearly all industry sectors

approx. 100 employees

New location since 2015 with about 6500 m²

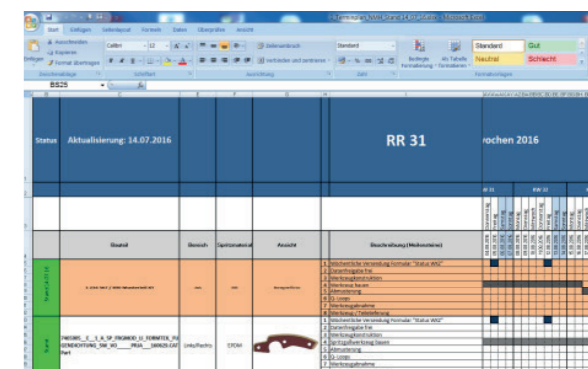
Processing-appropriate design of injection molded parts and tools

Process planning in cooperation with the customer



Out offer for every new project:

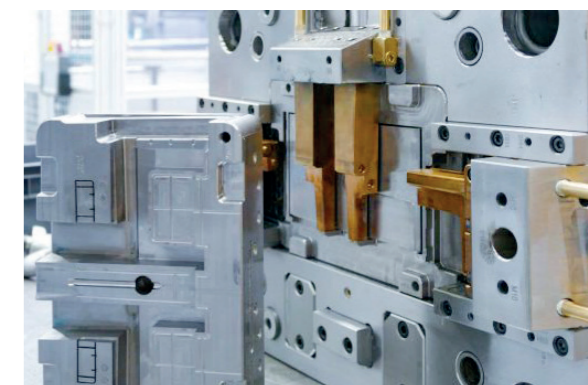
- Feasibility
- Simulations
- Calculations
- Schedules
- FMEA / PPAP etc.



Procurement of high precision production tools in cooperation with our long-term international partners

Service and maintenance at regular intervals

Internal adjustments and optimizations possible



INJECTION MOLDING

Injection molding machines: 15 Units (in 1k- und 2k- range)
 Closing force range: 350 KN to 3000 KN
 Injection weight: 1 g to 1000 g
 Materials: all common thermoplastics like PE, PP, POM, ABS, SAN, TPE-V, TPE-S, PBT, PET, PA, PC, PMMA, PPS, PEEK and any more
 Industries supplied: automotive, commercial vehicles, medical technology, white goods, construction industry and much more



Central material supply and drying

Additive admixture (e.g. color-/UV- Batch or similar) gravimetric, volumetric and manually with high repeat accuracy

Realization of own or external automation processes, like automated insertion of threaded bushes

Internal tempering furnace available

ITEMS

We successfully supply the following industries:
 Automotive/ construction industry/ medical technology/ mechanical engineering/ household appliances/ commercial vehicles

Parts from one component:



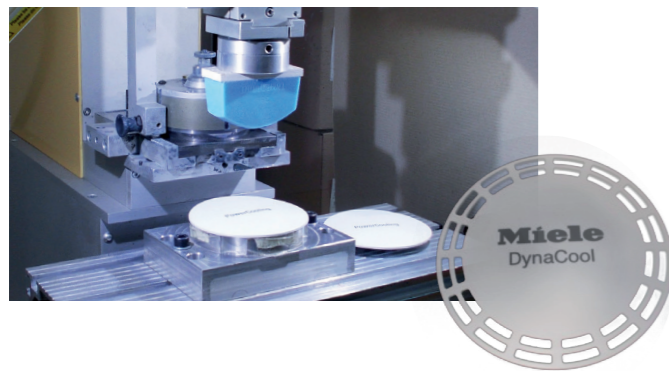
Parts from two components:



SUBSEQUENT PROCESSES

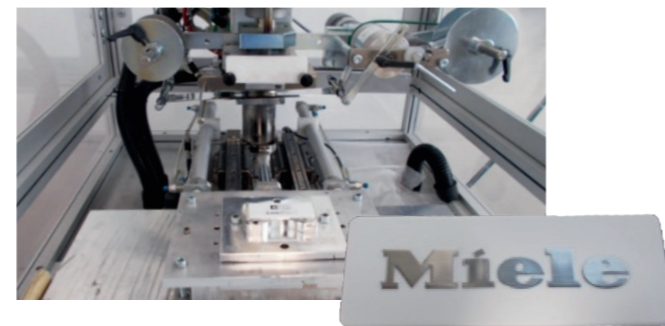
Pad printing

Print images up to 60 mm
Corona pretreatment possible



Hot stamping

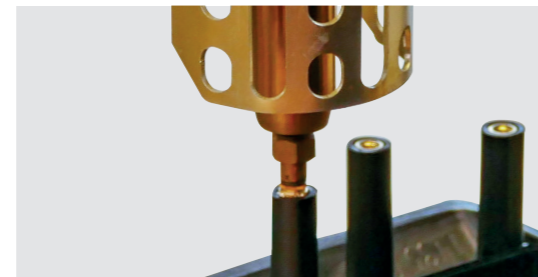
Embossing force: 8 KN
Embossing area: 70 x 90 mm



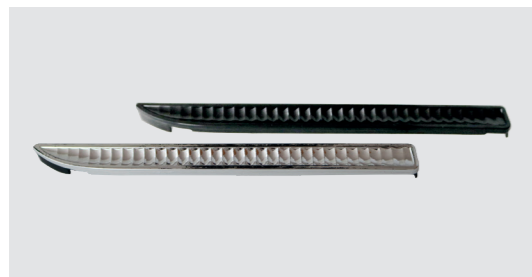
Painting/ hardcoating



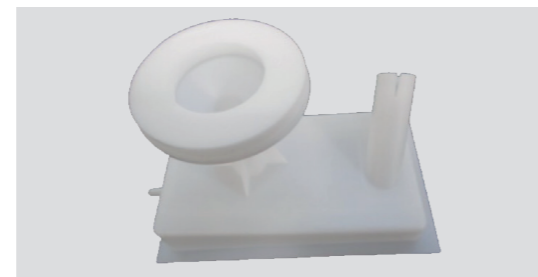
Hot embedding/ press-in of sockets etc.



Aluminum vapor deposition



Module assembly, Gluing etc.



WAREHOUSE / LOGISTICS

800 m² of storage space for
components/ raw materials
Packaging materials
Tools and much more



Shipping by our own fleet or long-term partner



QUALITY CONTROL/ CERTIFICATES

Internal quality assurance by optical/ tactile part measurement

Maximum size: 300 x 200 x 75 mm

Alternative measurements by external suppliers

Certified according to:

DIN EN ISO 9001:2015

DIN EN ISO 14001:2015

Ecoprofit

Work- and healthprotection



**MORE THAN 3,400 CUSTOMERS
WORLDWIDE – INNOVATION IS
OUR WORLD**



About NMH

NMH is one of the “hidden champions” for complex measuring, testing and assembly systems. The company employs around 100 employees at the Hohentengen location. NMH offers complete solutions – from the design to the final production, assembly and commissioning. Nearly all German premium automotive manufacturers and their suppliers are NMH customers.

**Excerpt of
references**



Company film



NMH GmbH
Am Flugplatz 2 | D-88367 Hohentengen
Telephone +49 (7572) 7619-0
Fax +49 (7572) 7619-29
info@nmh.de | www.nmh.de

